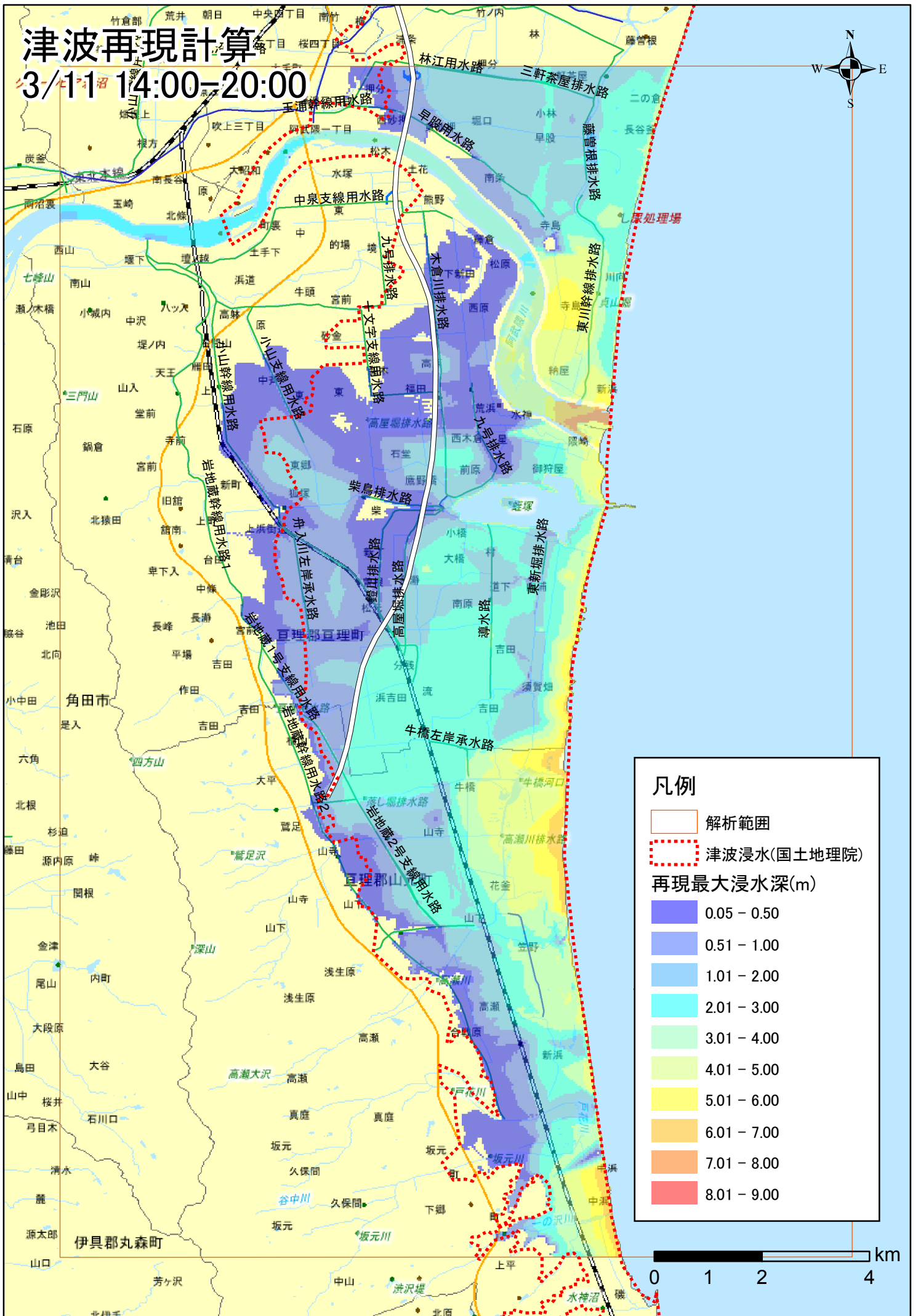
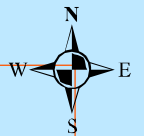


津波再現計算

3/11 14:00-20:00



凡例

- 解析範囲
- 津波浸水(国土地理院)

再現最大浸水深(m)

- 0.05 - 0.50
- 0.51 - 1.00
- 1.01 - 2.00
- 2.01 - 3.00
- 3.01 - 4.00
- 4.01 - 5.00
- 5.01 - 6.00
- 6.01 - 7.00
- 7.01 - 8.00
- 8.01 - 9.00

0 1 2 4 km